

## Barrel Catches



CAMCO

White barrel style catches from Camco. Side mount style. Screws included. Made in the U.S.A.

12-4203

Barrell Catch - 6/pk.

## Friction Catch



AP Products

A variation of the popular barrel catch. Designed for more spring action. Plastic, with clip. Set of two. Display packaged.

88-1274

Friction Catch

## Magnetic Catch



AP Products

Concealed magnetic catch side mount w/flat strike. Set of two. Display packaged.

88-1321

Magnetic Catch w/Flat Plate

## Concealed Positive Catch



AP Products

Mounts on backside of cabinet doors, with pull lever through small hole. Takes standard cabinet knobs. Sizes, determined by cabinet door thickness (lever length).

Display package. Set of two.

88-1251

5/8" Catch

88-1252

7/8" Catch

88-1253

1" Catch

88-1254

1 1/4" Catch

## Double Roller Catch



AP Products

Barrel type double roller with clip. Metal casing. Set of two. Display packaged.

88-1317

Double Roller Catch

## Roller Catch



AP Products

Single spring loaded roller catch. Positive latching. Set of two. Display packaged.

88-1318

Roller Catch w/Clip

**Magnetic Catch**



Concealed magnetic catch w/flat strike. Set of two. Display packaged.

88-1336 Magnetic Catch w/Flate Plate

**Brass Bead Catch**



Display packaged. Set of two.

88-1337 2" - Pair

**Barrel Catch w/ Nylon Clip**



Barrel catch & strike kit. Medium grip. Set of two. Display packaged.

99-9300 Barrell Catch - 6/pk

**Barrel Catch w/ Mental Clip**



Popular plastic catch with clip for closet doors and cabinets. Bulk.

15-1339 Barrell Catch

**Roller Catch w/ Prong**



Single loaded rollers 'grip' pylon catch. Positive action. Antique Copper. Two per poly bag.

88-1327 Roller Catch

**Overhead Hinge**



Brass hinge, package of two.

88-1061 Hinge

## Deluxe Non-Mortise Hinge



AP Products

88-1360

Polished Brass (Qty. 2)

## Positive Latch



AP Products

Includes 3/8, 1/2, 5/8, & 3/4" strikes to fit most cabinet doors.

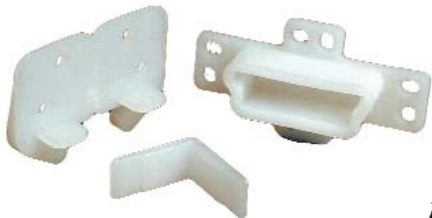
88-1430

Positive Latch, Small w/ 4 Strikes

88-1431

Positive Latch, Deco w/ 4 Strikes

## Drawer Hardware



RV Designer Collection

For single track center drawer slides. Replacement for most mobile home and RV brackets

15-4662

#2166 Rear Drawer Slide

15-4665

Drawer Guide

## Non-Mortise Hinges



AP Products

Flap type hinge commonly used on mobile home interior doors. Brass. Set of two. Display packaged.

88-1393

Non-Mortise Hinges - Pkg.

88-1394

Bulk

## Bath Door Privacy Latch



AP Products

For outswinging doors only, 3/4" - 1 1/4" inch door thickness. Display packaged.

99-0600

Latch

## Drawer Hardware



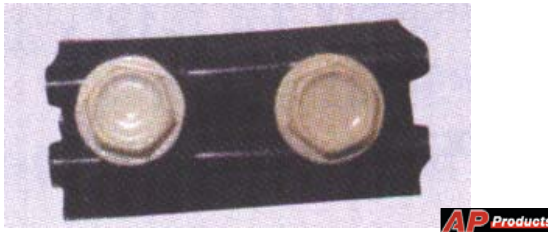
RV Designer Collection

For single track center drawer slides. Replacement for most mobile home and RV brackets

15-4661

Drawer Bracket

### Hex Head Screws



Number 8 screws with 1/4" hex head. Popular for skirting and siding. Self-threading steel sheet metal screw.

- 99-3718 #8 x 1 1/4", 500-count plastic reusable box
- 99-371820 #8 x 1 1/4", 50-count plastic reusable box
- 99-3720 #8 x 1 1/2", 500-count plastic reusable box
- 99-4002 #8 x 3/4", 50-count plastic reusable box
- 99-4006 #8 x 1", 500-count plastic reusable box
- 99-400620 #8 x 1", 50-count plastic reusable box
- 99-499320 #8 x 3/4", 500-count plastic reusable box

### Screws - Pan Head



- 99-499520 #8 x 2" Square Recess Pan Head - 50 Count
- 99-7977 #8 x 1" Square Recess Pan Head - 500 Box
- 99-7978 #8 1 1/2" Square Recess Pan Head Zinc - 500 Box

### Hex Head Screws



Number 8 screws with 1/4" hex head. Popular for skirting and siding. Self-threading steel sheet metal screw.

- 99-3719 #8 x 3/4" Screws - Carton
- 99-3721 #8 x 1" Screws - White 500 Count Plastic Reusable Box
- 99-3726 #8 x 3/4" Screws - White 500 Count Plastic Reusable Box
- 99-3727 #8 x 1" Screws - Brown 500 Count Plastic Reusable Box
- 99-3728 #8 x 1" Screws - White 500 Count Plastic Reusable Box
- 99-3730 #8 x 2" Screws 250 Count Plastic Reusable Box
- 99-3731 #8 x 3/4" Screws 50 Count Plastic Reusable Box
- 99-3732 #8 x 3/4" Screws - Brown 50 Count Plastic Reusable Box
- 99-3736 #8 x 1" Screws - White 50 Count Plastic Reusable Box
- 99-3822 #8 x 1/2" Screws 500 Count Plastic Reusable Box
- 99-382220 #8 x 1/2" Screws 50 Count Plastic Reusable Box
- 99-400220 #8 x 3/4" Screws 500 Count Plastic Reusable Box

## Scrulox Head Screws



Rather common screw for Mobile Homes and RV's. Screw takes #2 square head driver. Packed in reusable plastic box.

- 99-4997 #8 x 2" Flat Head Square - 250 Count
- 99-4998 #8 x 2 1/2" Flat Head Square - 100 Count

## Hex Washer Self-Drilling Screws



Number 8 x 3/4" screws with 1/4" hex head. Zinc Plated. Self-drilling. Packed in reusable plastic box.

- 99-8205 500-Count Box

## Washers



- 99-4003 3/8" Washers - each

## Lag Screws



- 99-4000 3/8" x 4" Lag Screws
- 99-4001 3/8" x 6" Lag Screws

## Scrulox Head Screws



Rather common screw for Mobile Homes and RV's. Screw takes #2 square head driver. Packed in reusable plastic box.

- 99-5000 #8 x 3" Flat Head, 100 count plastic box

## Rumble Washers



Neoprene backed washers used with screws to help eliminate roof rumble in mobile homes and RV's. 1-1/8" diameter. Fits #8 screw.

- 99-3342 500 Count Box
- 99-334210 100 Count Bag
- 99-334220 Each
- 99-3343 250 Count Bag

### Rosette Washers



For support in holding ceiling panels up to rafters. 1-1/8" diameter in clear or white. Rosette screws are #6 by 1-1/2" Phillips head, painted white. All are in bulk.

- 15-4858                      White Rosette Washer
- 15-4859                      Rosette Screw
- 15-6754                      Clear Rosette Washer

### Magnetic Screwdriver With Bits



Stainless steel shaft. 8" long and contains slot, phillips, 2 squares, and clutch. Carded.

- 59-9003                      Screwdriver/Bits

### Clutch Head Drivers



Rather common type used in mobile home and RV construction. Figure '8' type blade.

- 72-1740                      5/32" Clutch Head

### Mirror Clip



- 15-1406                      1/4" Mirror Clip

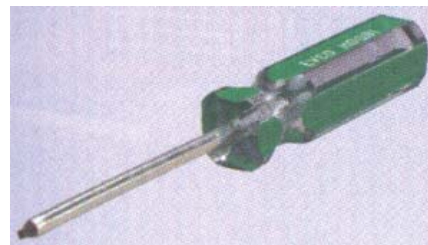
### 1/4" Hex Nut Driver



Holds the nut securely using special socket design for easier work. Unbreakable, shock-proof, fire-resistant, Tenite handles shaped for sure grip. Unique handle construction makes it twist and impact proof. Popular in mobile home and RV use. Carded.

- 72-1729                      1/4" Hex Driver

### Scrulox Driver



Quality driver in the three most popular sizes, #1, #2 and #3. Squared handles for sure grip.

- 99-3723                      #1 Driver
- 99-3724                      #2 Driver
- 99-3725                      #3 Driver

## 1/4" Hex Socket Bits



Magnetic socket bits for common 1/4" hex screws. For screw guns or drills. Carded.

- 99-1005      1/4" Socket with Hex Shaft
- 99-1006      1/4" Socket with Round Shaft
- 99-8204      5/16" Socket with Hex Shaft

## Phillips Power Bits



1/4" hex. 2" long.

- 99-6863                      #2 x 2" - Carded

## Pocket Tool



59-9002

Pocket Tool

## Clutch Bits



Power type, drive by length 1/4" x 1 15/16", size 5/32. Carded.

- 99-1012                      Clutch Bits

## Scrulox Bits



Screw gun bits for #2 Scrulox in three shaft lengths. Carded.

- 99-7941                      3" Shank Bit
- 99-7943                      2" Shank Bit
- 99-8204                      4" Shank Bit

## Flare Tool



19-2392

Flare Tool

### Rim Clamp



Mobile Home rim clamps for securing wheel rim to hub.

61-5790 Rim Clamp, Pkg/5

### Mobile Home Rim Clamp Bolts



Used for securing rim clamps to wheel hub.

61-5791 1/2" - 20 x 1 7/8", Pkg/5

### Rim Clamp Nuts



Used with rim clamp bolts above.

61-5795 Nuts - 1/2" - 20, Pkg/5

### Lug Bolt



Replacement 1/2" x 20 wheel lug bolt.

78-4691 Lug Bolt - Bulk

### Lug Bolt



Replacement 1/2" x 20 wheel lug bolt.

61-5787 Lug Bolt - Pkg of 5

### Lug Nuts / Studs



Replacement 1/2" - 20 wheel lug nut or stud.

78-4692 7/16 20 Flange Nut

## Lug Nuts / Studs



**QUALITY**

Replacement 1/2" - 20 wheel lug nut or stud.

78-4015	1/2" Stud - Bulk
79-4016	1/2" Wheel Nut - Bulk

## Proof Coil Chain



**PEERLESS**

Heavy duty chain with a multitude of uses. Safety chains, lock-up chains, towing, etc. Sold by the foot.

45-134710	3/16" Proof Chain
45-134810	1/4" Proof Chain
45-134910	5/16" Proof Chain
45-726110	3/8" Proof Chain

## Clevis Pin Grab Hooks



**PEERLESS**

Easily installed. Great for tie-down or tow-chains. Bulk.

45-1360	Hook for 5/16" Chain
45-3953	Hook for 3/8" Chain

## Repair Lap Links



**PEERLESS**

For simple economy repairs and building chains. Lock in place by hitting with a hammer. Bulk.

45-1350	1/4" x 1 1/4" Lap Link
45-1351	5/16" x 1 1/2" Lap Link

## Threaded Quick Links



**Prime**  
PRODUCTS

Handy repair link you can use without tools. Great for adding hooks to chains, making camper tie-down hardware, etc.

45-0100	3/16" Carded
45-0110	1/4" Carded
45-0120	5/16" Carded
45-0130	3/8" Carded

### LP Refill Fuel



Premium butane for filling all refillable gas lighters.

57496 Ronson 165 Gram Butane Fuel

### Gas Match - 3X



Continuous ignition gas match with 15" flexible nozzle extender. Has an adjustable flame length, safety lock, fuel viewing window and handy hanging ring. Total length 26" including 15" extender.

57543 Flex - Gas Match

### Gas Match



Can be used for a variety of uses: barbecues, fireplaces, equipment, pilot lights, kerosene heaters, candles, and more. Child proof safety lock. Adjustable flame. Fuel viewing. Disposable.

99-9578 GM-9 2 for 1 Gas Match

### Gas Match GM - 4



Safety lock, flame adjusting lever to adjust flame length, fuel viewing window to monitor butane, fuel capacity 0.15 oz. and total length 11" with 5-1/4" long pipe. One per display card.

57453 GM-4 Gas Match

### Gas Match GM - 3



Continuous ignition systems means that it will never blow out! The long slender design lets you get at hard to reach places with total safety. Loaded with lots of great features. Piezo electric starter uses one AA battery which is included. 10,000 starts. Safety lock. Fully adjustable flame. Fuel Viewing window. Refillable (Cigarette butane lighter refill). Hanger ring.

57433 GM-3 Gas Match